



gebruikershandleiding

standaard palletwagen 2500 kg / geel
(engels)



handpallettruck ACBF

OPERATING PALLET TRUCK

To raise the forks, place handle lever in UP position (bottom part of the handle slot).
See Figure 2.

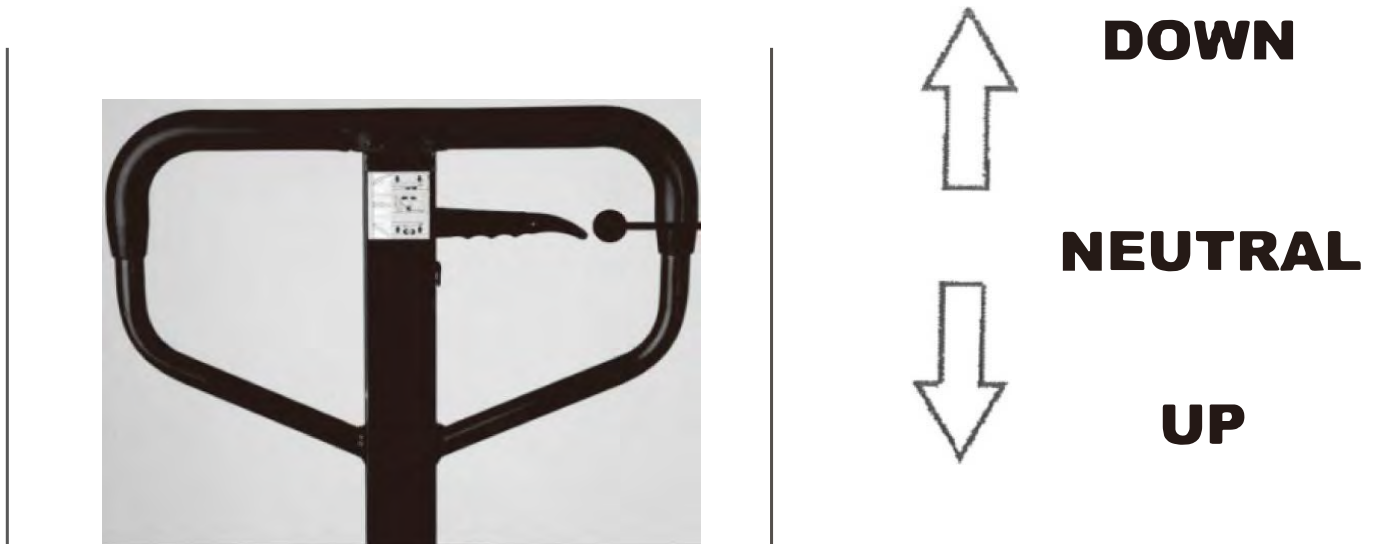


Figure 2

To lower forks, pull lever to DOWN position (upper part of the slot).
To freely move the handle, set the lever in NEUTRAL (center notch of the slot).

To lift a load:

1. Lower forks to lowest position.
2. Insert forks under load or into pallet.
3. Place lever in UP position (bottom part of the slot).
4. Move handles up and down until forks reach desired height.

To move a load:

1. Place lever in NEUTRAL position (center notch of the slot).
2. Pull or push to desired location.

To lower a load:

1. Pull lever to the DOWN position (upper part of the slot).
2. Pull forks away from load.

Cleaning Relief Valve

Over time, relief valve may become clogged with debris and will not work properly.

To clean relief valve, flush our hydraulic system as follows:

Pump handle quickly, raising pallet truck to full extent.

Then, quickly release pumping action.

TROUBLE SHOOTING # 1



5.
***** IM PORTANT - CHAIN*****
Before this step, make sure to feed the chain on the outside of the piston stem roller (see yellow arrow). If left in its proper position, it will not be possible to insert the handle pin and chain, breakage may occur. Align handle holes with pump housing holes and push through handle pin (see red arrow)



6.
Make sure that handle pin is completely through the handle and resting on the other side.



7.
Pull down on the handle to release the tension on the safety pin. CAREFULLY remove the safety pin.



8.
Feed the chain and nut first back inside the handle THROUGH the handle pin's center hole.
*****IMPORTANT - TIP *****
Release the up/down lever to its lowest position to make the process easier.



9.
Once the chain is in the proper position, check to see that it moves freely and that it is not obstructed.



10.
Using both hands, push on the valve cam to raise the hook inside the housing and feed the end of the chain in the cam. (see image at right)



11.
Pump the lever a few times to raise the forks. Put the up/down lever to its NEUTRAL position. Using a 14mm wrench and a flat screwdriver, adjust the valve cam so that the forks don't lower or rise (if handle is pumped) at this position.



12.
***** IMPORTANT - FINAL CHECK *****
Test all the features of the pallet truck before this step. The handle should be pumped with full strokes to prime and eliminate air in the system. The up/down lever should be checked at the handle's lowest position for this puts the most tension on the chain. Once the pallet truck is adjusted properly and is performing well, drive in the second spring pin using a hammer.

TROUBLE SHOOTING #2

Possible problems could arise in the operation of your hydraulic pallet truck. Their probable cause(s) and corrective action(s) follow:

Condition	Probable Causes	Corrective Action
Hydraulic unit does not lift	Oil low in tank	Make sure there is no till leakage from valve and add oil.
	Steel ball not seated in hydraulic unit	See "Cleaning Relief Valve" in this manual.
	Worn O-ring in ram cylinder	Consult authorized service centre.
Once lifted truck lowers by itself	Steel ball not seated in hydraulic unit	See "Cleaning Relief Valve" in this manual.
	Worn O-ring in ram cylinder	See "Cleaning Relief Valve" in this manual.
	Relief valve not seated properly	See "Cleaning Relief Valve" in this manual.
	Relief valve not adjusted properly	Reload truck within load capacity and adjust valve by pressure adjustment screw.
	Oil leakage from each valve	Tighten plug of each valve.
Fork does not lower	Cam broken	Replace cam chain.
	UP-DOWN cam nut out of adjustment	Refer to "Adjusting UP-DOWN Cam" in this manual.
	Broken fork rods and linkage	Replace broken parts.
Lever does not set at NEUTRAL position	UP-DOWN cam nut out of adjustment	Refer to "Adjusting UP-DOWN Cam" in this manual.

Adjusting UP-DOWN Cam



DO NOT adjust the up/down lever control using the lock nut at the end of the handle chain. If nylon locking threads are removed from the screw threads, rolling vibration will cause the nut to unscrew and fall off, leaving the up/down lever unusable.



Use proper set screw and lock nut adjustment located on the side of the pump. This feature was designed to ease the pallet truck adjustment. Tools required are: flat screwdriver and a 14mm wrench.

Fig.1

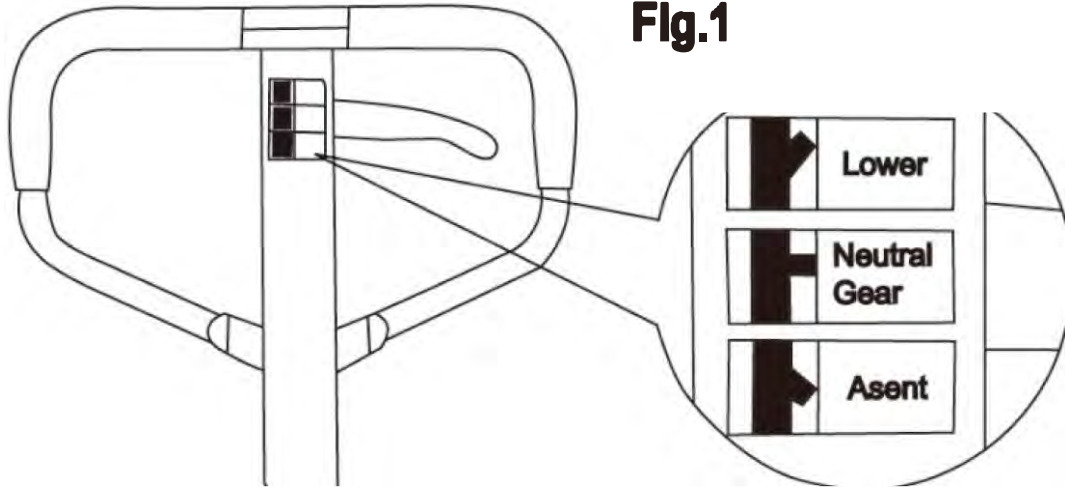
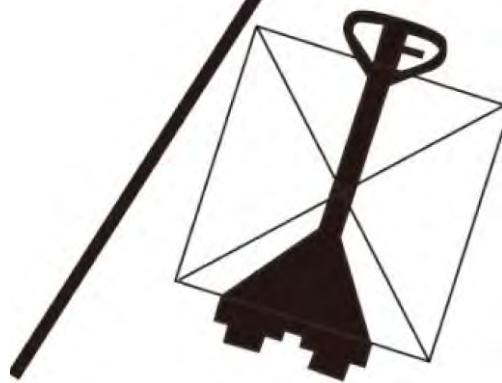
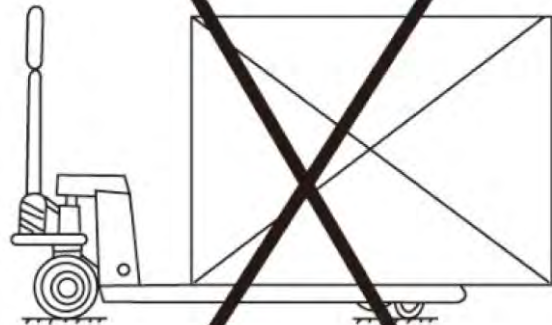
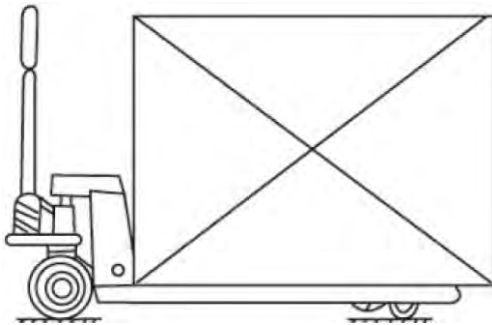
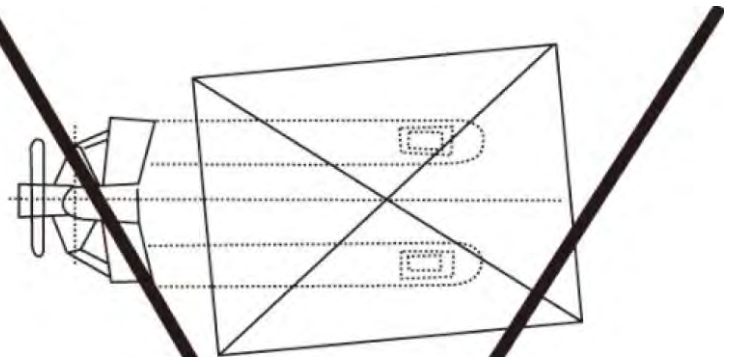
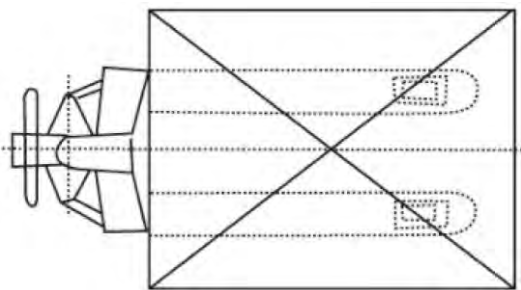


Fig.2

A

B



WARNING!

- Read and understand the entire operator's manual before using the pallet truck. Don't load pallet truck beyond rated capacity of 5,500 lbs. for the standard models and 6,600 lbs. for heavy-duty models.
- Secure load before transporting.
- Keep the load centered on the pallet.
- Don't operate loaded pallet truck on ramps or inclines.
- Always wear appropriate safety shoes.
- Never leave a loaded pallet truck unattended in the raised position; always lower load to the floor.

PALLET TRUCK ASSEMBLY

Note: Individual trucks are assembled and ready to use. Pallet trucks purchased in crate quantities (6 units to a crate) require some assembly.

Tools needed for assembly: hammer, flat screwdriver, 14mm wrench

To attach handle assembly to the frame:



- 1.**
***** IMPORTANT - SAFETY *****
Verify that spring safety pin is in place. The pin should be well rested in the holes situated on each side of the pump housing. If the safety pin is not rested properly in one of the holes, put pressure on the spring using a "C" clamp pushing down on the pump stem. Once pressure is relieved on the pin, reinsert properly and remove clamp slowly.



- 2 .**
Insert handle pin into corresponding holes and using a hammer, drive in one spring pin on one side only.



- 3 .**
Insert handle pin without the handle and verify that the center hole is facing you.



- 4.**
If handle pin's center hole is facing away from you, insert pin from other side.
***** IMPORTANT - FACT *****
The up/down lever's chain passes through this center hole. If left this way, the chain will have an "S" form and be under too much tension, making the up/down lever difficult to use accurately.

CONTENT

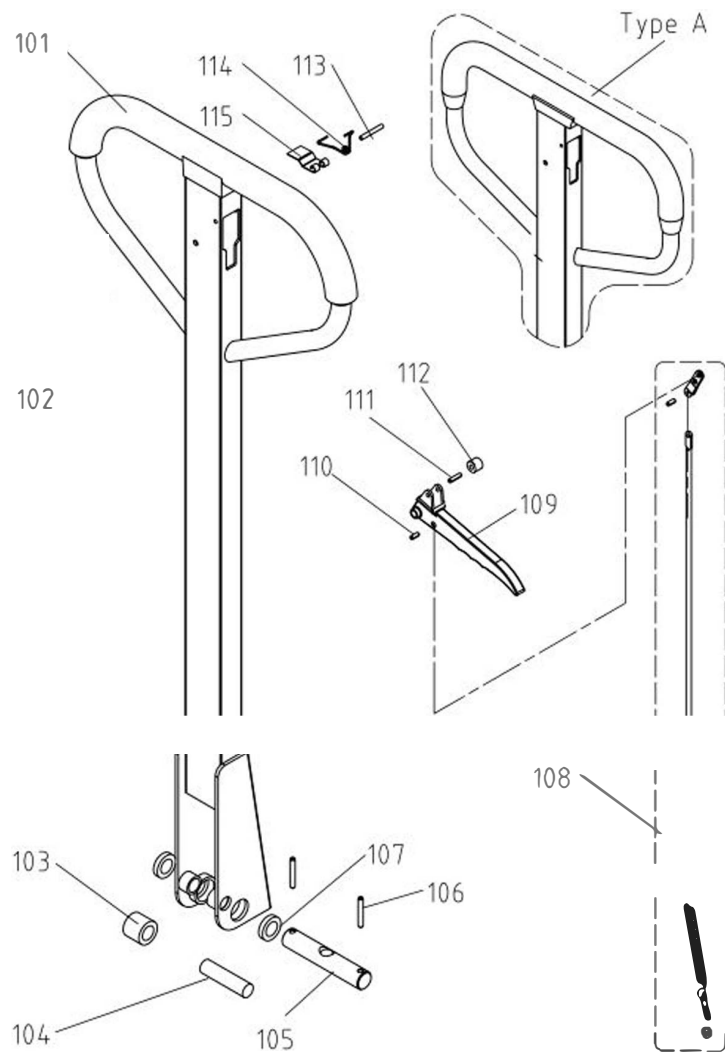
Exploded view and spare parts list

1.Handle.....

2.Chassis.....

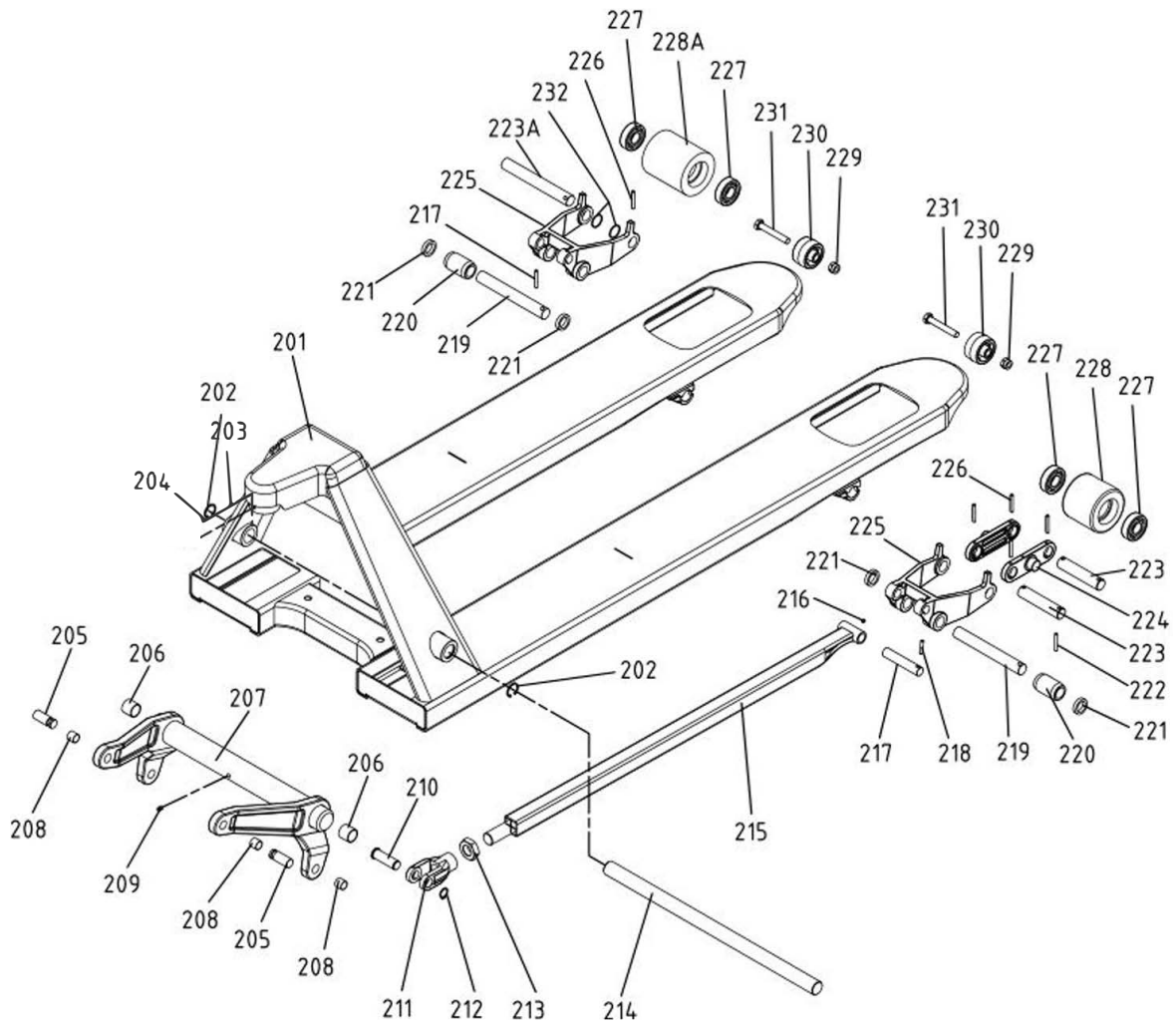
3.Pump.....

1.Handle



Nr.	Item	Qty.	Note
101	Tiller	1	
102	Spring pin	1	
103	Pinch roller	1	
104	Pinch roller pin	1	
105	Axle with hole	1	
106	Spring Pin	6	
107	Axle sleeve	2	
108	Chain+ Connecting rod	1	
109	Finger lever	1	
110	Spring pin	1	
111	Spring pin	1	
112	Roller	1	
113	Spring pin	1	
114	Torsional spring	1	
115	Hinge	1	
Type A	Tiller		

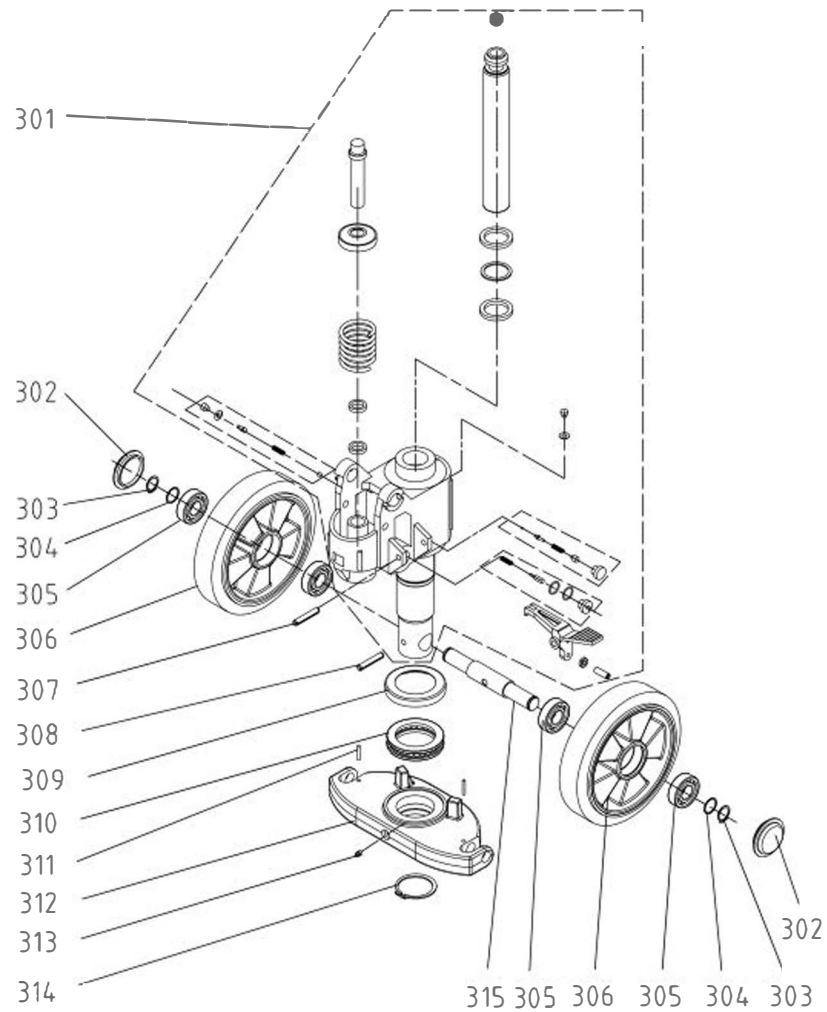
2.Chassis



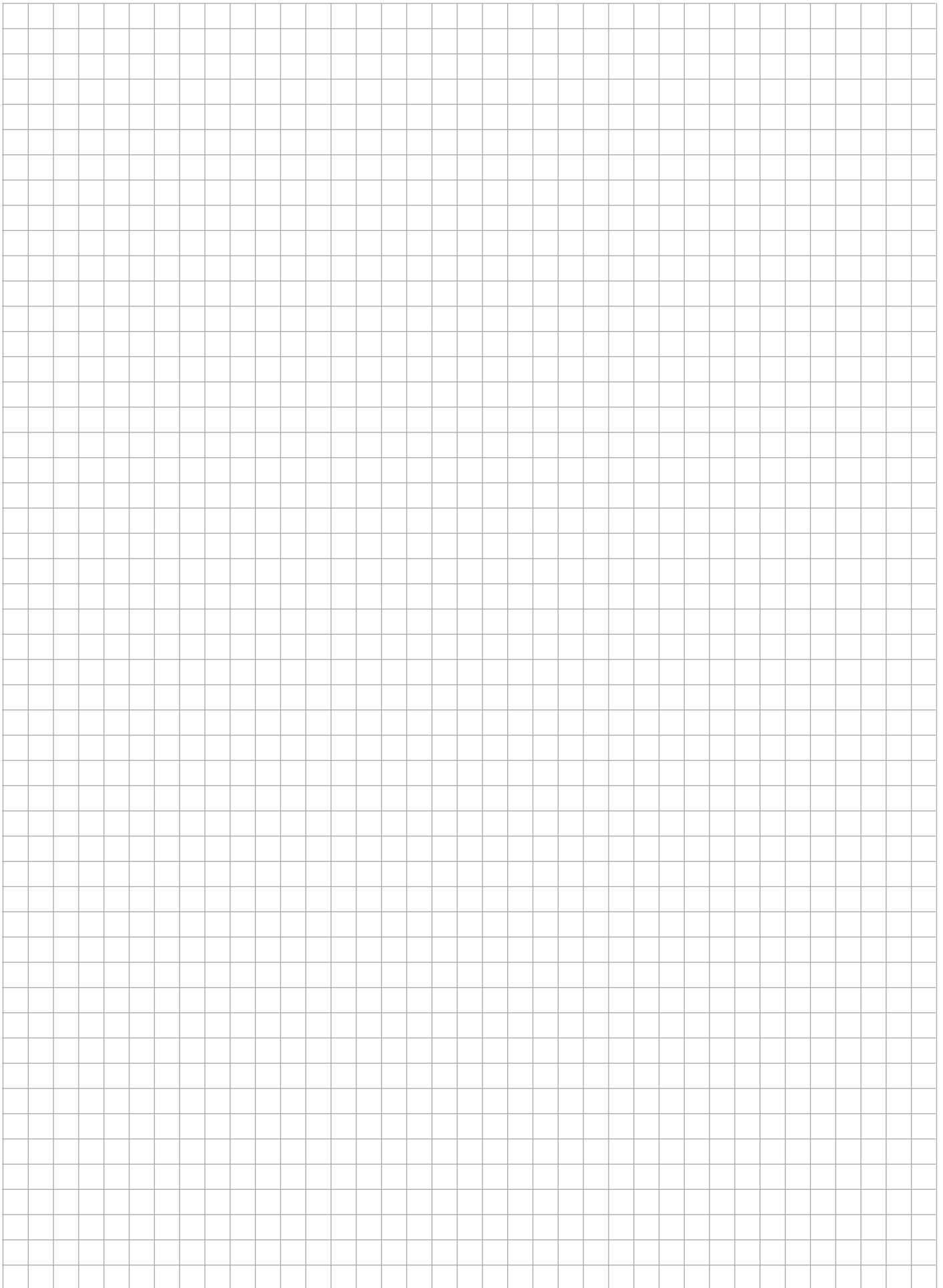
Nr.	Item	Qty.	Note
201	Chassis	1	
202	Circlip for hole	2	
203	Spring gasket	1	
204	Bolt	1	
205	Connecting pin	2	
206	Bushing	2	
207	Swing arm	1	
208	Bushing	4	
209	Grease nipple	1	
210	Axle	2	
211	Push rod fork	2	
212	Circlip for shaft	2	
213	Nut	2	
214	Long axle	1	
215	Push rod	2	
216	Grease nipple	1	
217	Axle	2	

Nr.	Item	Qty.	Note
218	Spring pin	2	
219	Level block axle	2	
220	Exit roller	2	
221	Axle sleeve	4	
222	Spring pin	2	
223	Roller axle	4	
224	Tri-connect plate	4	
225	Level block	2	
226	Spring pin	2	
227	Bearing	8or4	D or S
228	Roller	4	Double
229	Nut	2	
230	Enter roller	2	
231	Bolt	2	
232	Axle adjusting gasket	4	Single
223A	Roller	2	Single
228A	Roller axle	2	Single

3.Pump



Nr.	Item	Qty.	Note
301	Pump	1	
302	Dust ring	1	
303	Circlip for shaft	1	
304	Axle adjusting gasket	1	
305	Bearing	4	
306	wheel	2	
307	Spring pin	1	
308	Spring pin	1	
309	Bearing gap	1	
310	Pushing ball bearing	1	
311	Spring pin	2	
312	Thrust strip	1	
313	Grease nipple	1	
314	Circlip for shaft	1	
315	Wheel axle	1	





Ijsselstraat 9-13 \ 5347 KG Oss \ The Netherlands \ T +31 (0)412 667650 \ E info@begra.nl \ www.begra.nl
[Iban](#) NL80 RABO 0146 3423 21 \ [KvK](#) Oost Brabant 17207142 \ [BTW](#) 8180.3852.4B01